



---

## ATF15xx Power-On Reset Hysteresis Feature

---

### APPLICATION NOTE

#### Abstract

---

For some applications, a larger power reset hysteresis is required to prevent an Atmel® ATF15xx Complex Programmable Logic Device (CPLD) from resetting its registers due to supply voltage dips or glitches. For other applications, it might be more desirable to reset the registers in an ATF15xx CPLD when the supply voltage dips or glitches. To be compatible with both of these application types, the Power-On (or power-up) Reset (POR) hysteresis of the ATF15xx CPLD can be programmed to **Large** or **Small** by the user. This application note provides the details of this programmable feature.

#### Features

---

- Small vs. Large POR Hysteresis
- Recommended Settings for 5.0V and 3.3V ATF15xx CPLDs
- Design Software Option Settings

# Table of Contents

---

Abstract.....	1
Features.....	1
1. Overview.....	3
1.1. Small POR Hysteresis.....	3
1.2. Large POR Hysteresis.....	3
1.3. Power-up Requirements.....	4
1.4. Recommendation.....	4
2. Design Option Setting.....	5
2.1. ProChip Designer.....	5
2.2. WinCUPL.....	6
2.3. POF2JED.....	6
3. Revision History.....	7

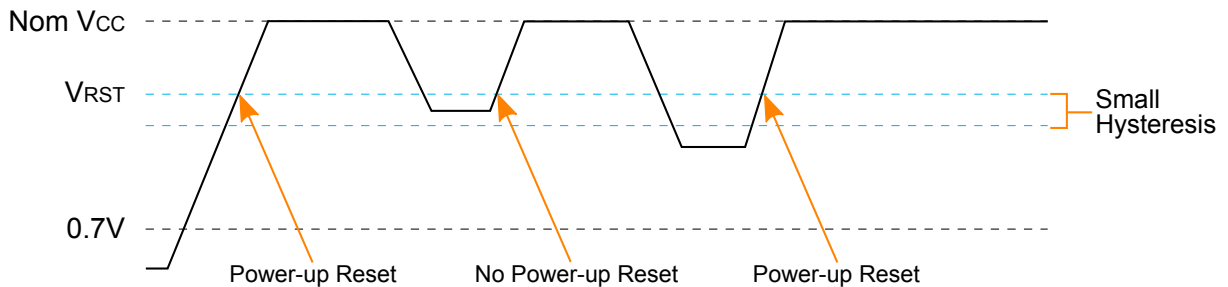
## 1. Overview

The ATF15xx CPLDs are designed with a power-up reset function to reset all registers (D/T flip-flops or latches) when  $V_{CC}$  rises slightly above the power-up reset voltage level ( $V_{RST}$ ). When  $V_{CC}$  falls below the power-down voltage level and then subsequently rises above  $V_{RST}$ , the registers return to the reset state. The hysteresis between the power-up reset voltage level and power-down voltage level is controlled by the POR Hysteresis programmable option and can be set to **Small** or **Large**. This programmable feature gives users the flexibility to choose the power-up reset hysteresis level that is most suitable for the intended application.

### 1.1. Small POR Hysteresis

When the POR Hysteresis option is set to **Small**, the power-down voltage level is just slightly below  $V_{RST}$ . Therefore, whenever  $V_{CC}$  drops slightly below  $V_{RST}$ , the ATF15xx registers reset. This behavior is depicted in the below figure.

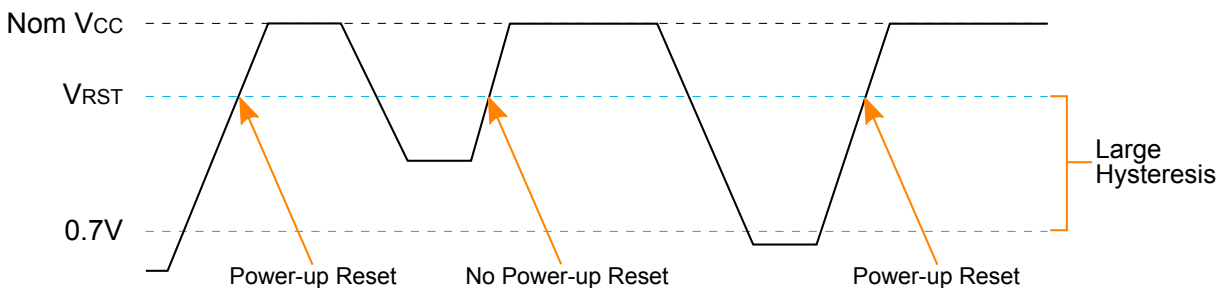
Figure 1-1 Reset Behaviors with POR Hysteresis Set to Small



### 1.2. Large POR Hysteresis

When the POR Hysteresis option is set to **Large**, the power-down voltage level is approximately 0.7V. Therefore, the ATF15xx registers reset only when  $V_{CC}$  drops below 0.7V and then subsequently rises above  $V_{RST}$ . This behavior is depicted in the below figure. When the POR Hysteresis option is set to **Large**, the ATF15xx  $I_{CC}$  is reduced by several hundred  $\mu A$ . This is especially significant for the ATF15xxASL and ATF15xxASVL low-power devices in order to minimize power consumption.

Figure 1-2 Reset Behaviors with POR Hysteresis Set to Large



### 1.3. Power-up Requirements

Due to the asynchronous nature of reset and uncertainty of how  $V_{CC}$  actually rises in the system, the following power-up conditions are required:

1. The  $V_{CC}$  rise must be monotonic.
2. After reset occurs, all input and feedback setup times must be met before driving the clock pin high.
3. The clock must remain stable during device power-up.
4. When the POR Hysteresis option is set to Large, the following condition is added to ensure that the registers are properly re-initialized when  $V_{CC}$  rises again: If  $V_{CC}$  falls to around 2.0V, it must shut off completely before the ATF15xx can be powered up again.

### 1.4. Recommendation

For the ATF15xxAS/ASL 5.0V CPLDs,  $V_{RST}$  is typically midway between the specified minimum power supply voltage and ground. Therefore, the margin for  $V_{CC}$  dips or noise is generally sufficient even when POR Hysteresis is set to **Small**. However, for the ATF15xxASV/ASVL 3.3V CPLDs,  $V_{RST}$  is typically just below the specified minimum power supply voltage and the available margin is reduced. In applications where the supply voltage falls close to the specified minimum power supply voltage, Atmel recommends increasing the margin for falling  $V_{CC}$  by setting the POR Hysteresis option to **Large**. With the Large POR Hysteresis option selected, the power-down voltage level drops to a much lower level to prevent the registers from resetting due to small  $V_{CC}$  dips, noise or glitches.

## 2. Design Option Setting

The POR Hysteresis option setting can be specified in the design source file or in the design development software tool graphical user interface.

### 2.1. ProChip Designer

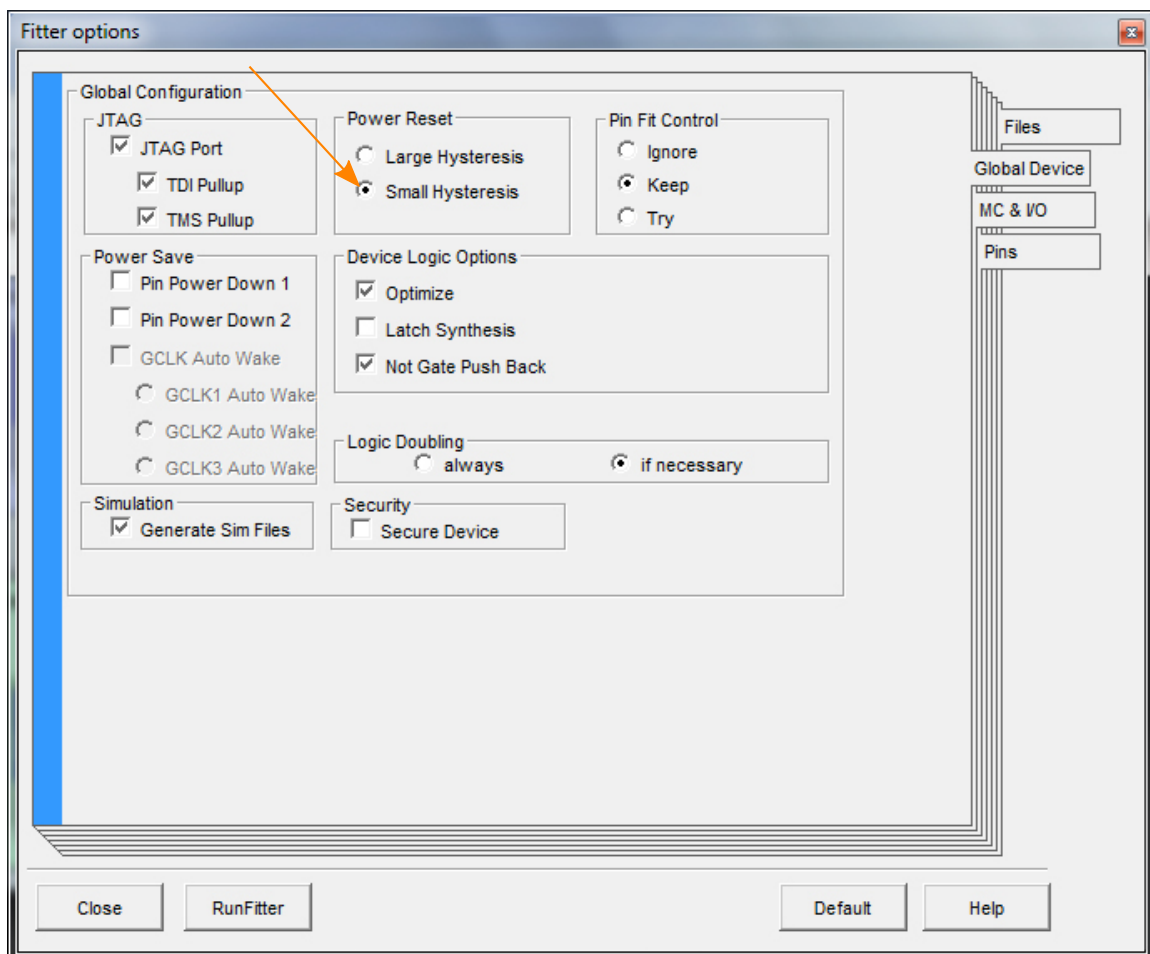
To specify the POR Hysteresis option setting in the Atmel ProChip Designer:

1. Open the **Fitter options** window by clicking on the **Atmel Fitter** button under the **Device Fitter** process.
2. Select the **Global Device** tab.
3. Check either the **Large Hysteresis** or **Small Hysteresis** radio button under **Power Reset** as shown in the below figure.

The ProChip Designer default setting is **Small** for ATF15xxAS/ASL 5.0V device types and **Large** for ATF15xxASV/ASVL 3.3V device types.

The ProChip Designer can be downloaded from: [www.atmel.com/tools/PROCHIPDESIGNERV5\\_0.aspx](http://www.atmel.com/tools/PROCHIPDESIGNERV5_0.aspx)

Figure 2-1 ProChip Designer POR Hysteresis Option Setting



## 2.2. WinCUPL

To set the POR Hysteresis option to **Small** in Atmel WinCUPL, the following property statement in the CUPL design file must be included.

```
PROPERTY ATMEL {POWER_RESET = OFF};
```

To set the POR Hysteresis option to **Large** in WinCUPL, the following property statement in the CUPL design file must be included.

```
PROPERTY ATMEL {POWER_RESET = ON};
```

The default setting in WinCUPL is **Small** for all ATF15xx device types.

WinCUPL can be downloaded from: [www.atmel.com/tools/WINCUP.L.aspx](http://www.atmel.com/tools/WINCUP.L.aspx)

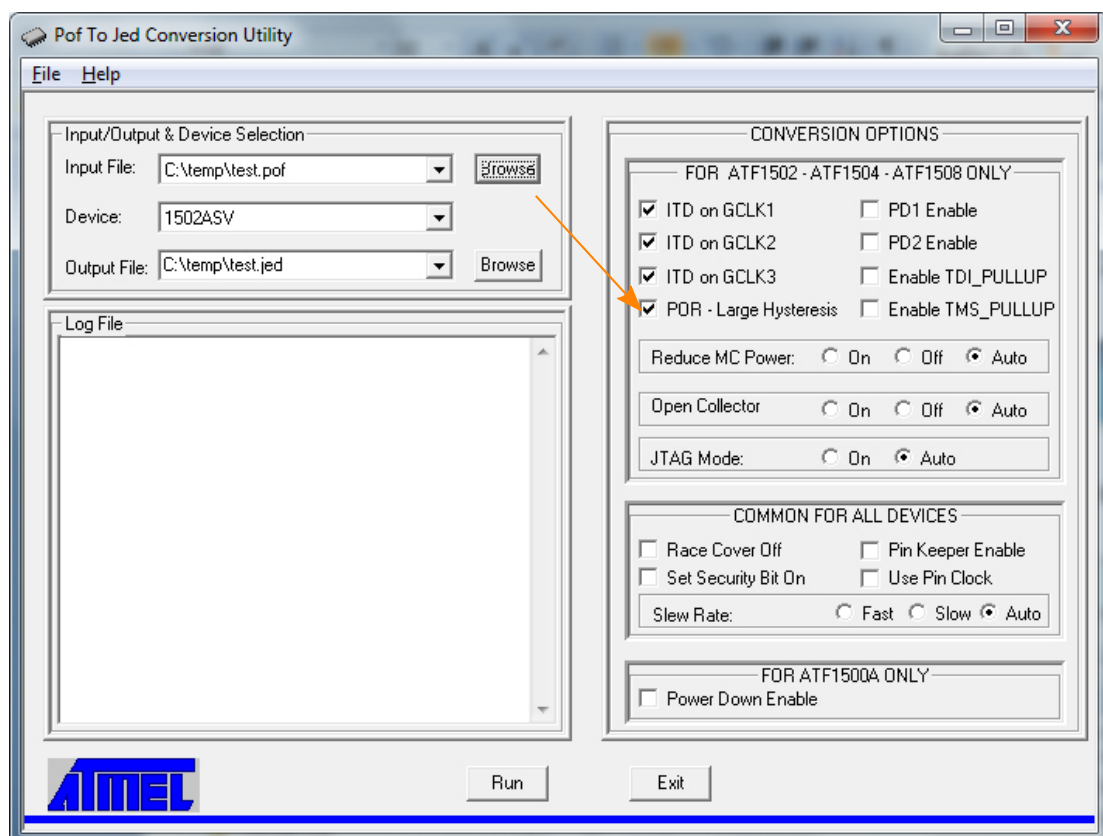
## 2.3. POF2JED

To set the POR Hysteresis option to **Large** in Atmel POF2JED GUI, check the box **POR – Large Hysteresis** as shown in the below figure. Otherwise, uncheck this box to set the POR Hysteresis option to **Small**.

The POF2JED default setting in is **Small** for ATF15xxAS/ASL 5.0V device types and **Large** for ATF15xxASV/ASVL 3.3V device types.

The POF2JED can be downloaded from: [www.atmel.com/tools/POF2JED.aspx](http://www.atmel.com/tools/POF2JED.aspx)

Figure 2-2 POF2JED POR Hysteresis Option Setting



### 3. Revision History

Doc Rev.	Date	Comments
A	10/2015	Initial document release.

Atmel®, Atmel logo and combinations thereof, Enabling Unlimited Possibilities®, and others are registered trademarks or trademarks of Atmel Corporation in U.S. and other countries. Other terms and product names may be trademarks of others.

DISCLAIMER: The information in this document is provided in connection with Atmel products. No license, express or implied, by estoppel or otherwise, to any intellectual property right is granted by this document or in connection with the sale of Atmel products. EXCEPT AS SET FORTH IN THE ATMEL TERMS AND CONDITIONS OF SALES LOCATED ON THE ATMEL WEBSITE, ATMEL ASSUMES NO LIABILITY WHATSOEVER AND DISCLAIMS ANY EXPRESS, IMPLIED OR STATUTORY WARRANTY RELATING TO ITS PRODUCTS INCLUDING, BUT NOT LIMITED TO, THE IMPLIED WARRANTY OF MERCHANTABILITY, FITNESS FOR A PARTICULAR PURPOSE, OR NON-INFRINGEMENT. IN NO EVENT SHALL ATMEL BE LIABLE FOR ANY DIRECT, INDIRECT, CONSEQUENTIAL, PUNITIVE, SPECIAL OR INCIDENTAL DAMAGES (INCLUDING, WITHOUT LIMITATION, DAMAGES FOR LOSS AND PROFITS, BUSINESS INTERRUPTION, OR LOSS OF INFORMATION) ARISING OUT OF THE USE OR INABILITY TO USE THIS DOCUMENT, EVEN IF ATMEL HAS BEEN ADVISED OF THE POSSIBILITY OF SUCH DAMAGES. Atmel makes no representations or warranties with respect to the accuracy or completeness of the contents of this document and reserves the right to make changes to specifications and products descriptions at any time without notice. Atmel does not make any commitment to update the information contained herein. Unless specifically provided otherwise, Atmel products are not suitable for, and shall not be used in, automotive applications. Atmel products are not intended, authorized, or warranted for use as components in applications intended to support or sustain life.

SAFETY-CRITICAL, MILITARY, AND AUTOMOTIVE APPLICATIONS DISCLAIMER: Atmel products are not designed for and will not be used in connection with any applications where the failure of such products would reasonably be expected to result in significant personal injury or death ("Safety-Critical Applications") without an Atmel officer's specific written consent. Safety-Critical Applications include, without limitation, life support devices and systems, equipment or systems for the operation of nuclear facilities and weapons systems. Atmel products are not designed nor intended for use in military or aerospace applications or environments unless specifically designated by Atmel as military-grade. Atmel products are not designed nor intended for use in automotive applications unless specifically designated by Atmel as automotive-grade.